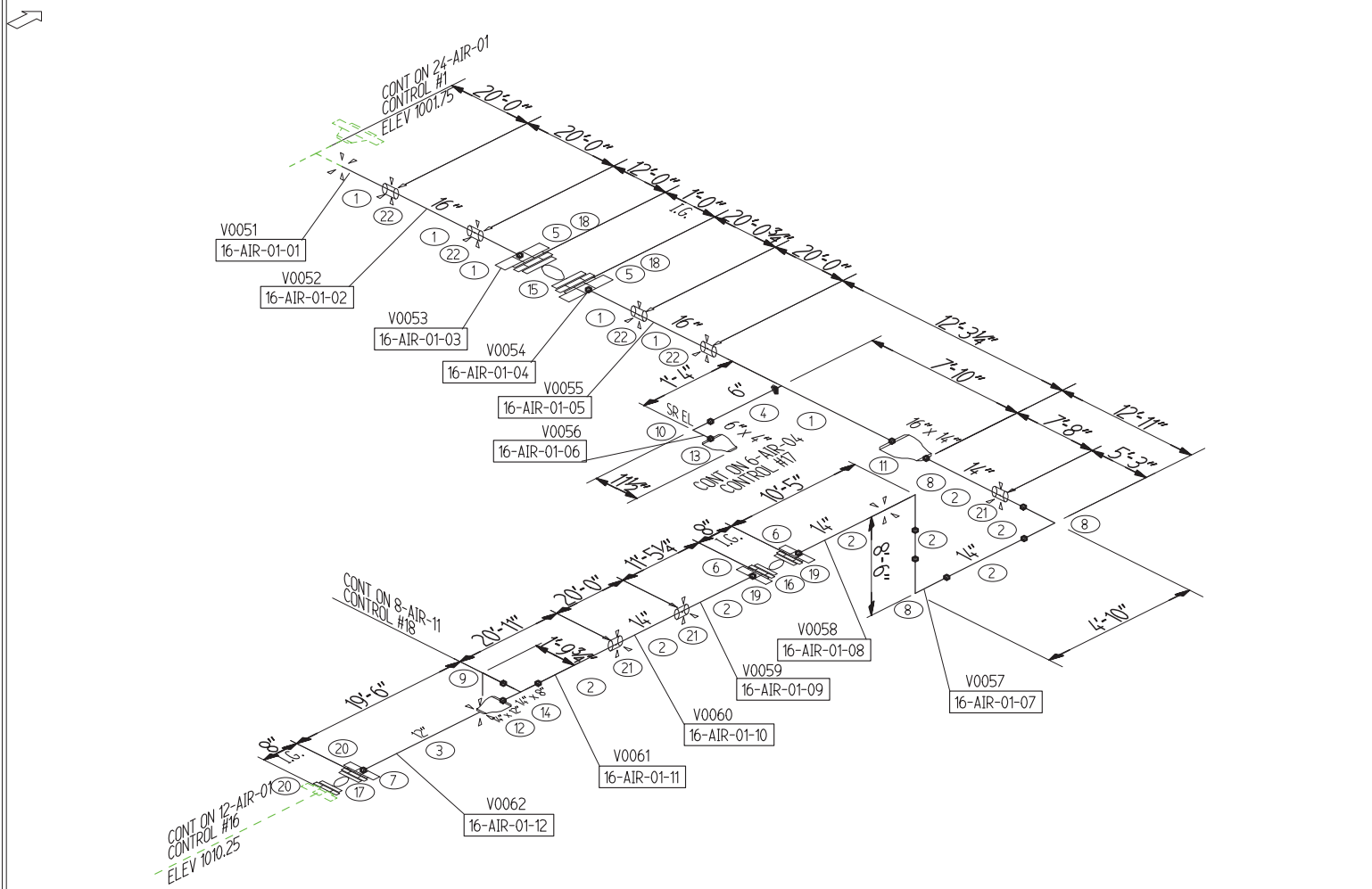


CUT	FIT	FAB	DIM	VISUAL	NDE	HYDRO	SHIP	www.pipingservice.com	Heat Numbers	ITEM	QTY	A53-B ERW Pipe	
-----	-----	-----	-----	--------	-----	-------	------	-----------------------	--------------	------	-----	----------------	--



1	6	16" Std(.375)	Total 101'-8 1/2"
2	8	14" Std(.375)	Total 77'-6 1/4"
3	1	12" Std(.375)	Total 17'-5 1/2"
4	1	6" Std(.280)	Total 2'-5 1/8"
A105 Flanges			
5	2	16" 150# RF Slip-On Flange	
6	2	14" 150# RF Slip-On Flange	
7	1	12" 150# RF Slip-On Flange	
A234-WPB Fittings			
8	3	14" 90 LR Elbow	Std
9	1	8" 90 LR Elbow	Std
10	1	6" 90 1.0d SR Elbow	Std
11	1	16" x 14" Concentric Reducer	Std
12	1	14" x 12" Concentric Reducer	Std
13	1	6" x 4" Concentric Reducer	Std
14	1	14" x 8" Reducing Tee	Std
Valves			
15	1	16 inch 2 Arch Expansion Joint	
16	1	14 inch 1 Arch Expansion Joint	
FLEX-10			
17	1	12 inch 1 Arch Expansion Joint	
FLEX-11			
Miscellaneous			
18	2	16 inch RF Gasket 1/16" thk	
19	2	14 inch RF Gasket 1/16" thk	
20	2	12 inch RF Gasket 1/16" thk	
21	3	14" I.D. C.S. COUPLING	
22	4	16" I.D. C.S. COUPLING	

RT	MT	PWHT	NONE	PIPE SPEC	CS-3	SURF AREA	860.2 sq ft	JOB CODE	PAINT
PT	VISUAL	HYDRO		FAB CODE	B31-3	INSUL		REF DRG	FSM-03
WELD PROC.		2" & LARGER - 311-GM-FC-0		1 1/2" & SMALLER - 311-GT-0		DRN	JM	DATE	2010-05-11
1		ISSUE FOR CONSTRUCTION		2011-01-22		CHK	ZJK	DATE	2010-05-11
A		ISSUE FOR REVIEW		2010-05-11		CHK	APP	DATE	2011-02-18

SI Piping Service Inc.
 100 County Trunk KK
 Kaukauna, WI 54130
 (920) 734-1666
 www.pipingservice.com

10 butt welds		CLIENT	PIPING SERVICE, INC		P.O.No.		DIA-INS	148.0	WEIGHT	12803 lb
PROJECT						JOB No.	10-070	CONTROL No.	15	
SPOOL		16-AIR-01		REV.	1	SHEET	1 of 1			